
User Guide

TP-Tool Ver 1.4



www.oxhoo.com

CONTENTS

1. INTRODUCTION.....	4
2. SUPPORT DEVICE & INTERFACE	4
3. USER INTERFACE	5
1) DEVICE CONFIGURATION DIALOG.....	5
2) FUNCTION SELECT DIALOG	6
3) NV LOGO DOWNLOAD DIALOG	6
4) USER SETUP DIALOG.....	7
5) FIRMWARE DOWNLOAD DIALOG	7
6) NETWORK SETTING DIALOG (ETHERNET-II INTERFACE)	8
7) WI-FI NETWORK SETTING DIALOG (WI-FI INTERFACE).....	8
3. DESCRIPTION OF EACH FUNCTIONS	10
1) LOGO DOWNLOAD.....	10
2) USER SETUP	14
(1) Description of User Setup Options.....	15
(2) New Option	20
3) FIRMWARE DOWNLOAD (USING TP-TOOL)	22
(1) TP-30 / TP-40 / TP35 / TP-45 series.....	22
4) FIRMWARE DOWNLOAD (USING USB MEMORY STICK).....	23
5) FIRMWARE DOWNLOAD (BOOT, DOWNLOADER)	24
6) NETWORK SETTING DIALOG (ETHERNET-II INTERFACE)	25
(1) Ethernet-II Network Dialog	25
(2) Ethernet-II Network Setting Dialog.....	25
(3) Web Server	28
7) NETWORK SETTING DIALOG (WI-FI INTERFACE).....	30
(1) Wi-Fi Network Dialog	30
(2) Glossary of Terms.....	31
(3) Install a Virtual COM Driver (Windows XP, POSReady 2009)	32
(4) Install a Virtual COM Driver (Windows 7, POSReady 7)	34
(5) Infrastructure mode setting.....	35
(6) Limited AP setting	38
(7) Print Test page (Windows XP, POSReady 2009).....	40

(8)	Print Test page (Windows 7, POSReady 7)	43
(9)	WLAN Tips.....	46
(10)	WLAN factory reset.....	47

oxhoo

1.INTRODUCTION

It is integrated software for POS Printer TP-30/40/35/45 series and it includes the all of the necessary utility for our printer product. If you want to other resource for our printer example windows driver, OPOS driver and other interface driver, please visit our web site.

2.SUPPORT DEVICE & INTERFACE

DEVICES

- TP-30 / TP-40 / TP35 / TP45
- TP35 II / TP45 II

FUNCTIONS

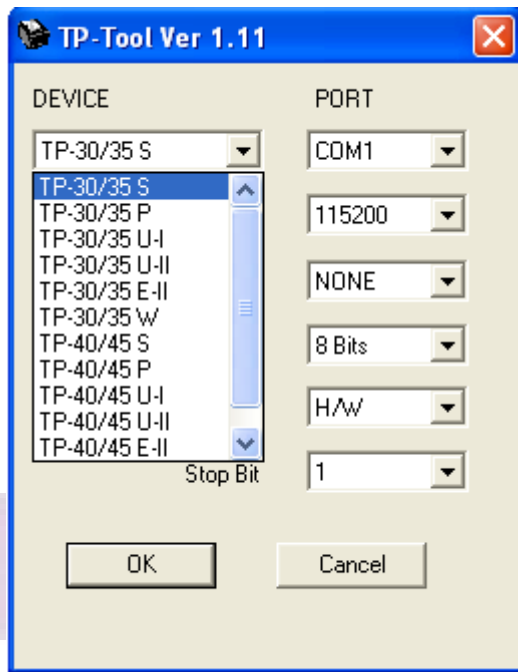
- NV Logo download
- User Setup
- Firmware download

INTERFACES

- RS-232c (Serial)
- IEEE1284 (Parallel)
- USB (Virtual COM , USB)
- Ethernet (TCP/IP)
- WLAN (TCP/IP) (**TP35II / TP45II is not supported.)**

3. User Interface

1) Device Configuration Dialog



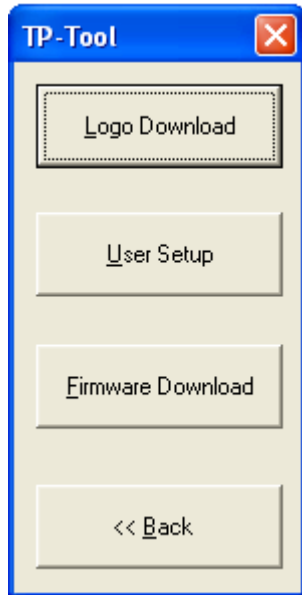
Device Configuration Dialog

You can select the device which you want to use comfortable, on the TP-Tool.

<DEVICE LIST>

- TP-30/35S : TP-30/35 with Serial Interface
- TP-30/35U-I : TP-30/35 with Virtual COM Interface
- TP-30/35P : TP-30/35 with Parallel Interface
- TP-30/35 U-II : TP-30/35 with USB Interface
- TP-30/35 E-II : TP-30/35 with Ethernet-II Interface
(TCP/IP type)
- TP-30/35W : TP-30/35 with Wi-Fi Interface
(TCP/IP type)
- TP-40/45S : TP-40/45 with Serial Interface
- TP-40/45U-I : TP-40/45 with Virtual COM Interface
- TP-40/45P : TP-40/45 with Parallel Interface
- TP-40/45U-II : TP-40/45 with USB Interface
- TP-40/45-EII : TP-40/45 with Ethernet-II Interface
(TCP/IP type)
- TP-40/45W : TP-40/45 with Wi-Fi Interface
(TCP/IP type)

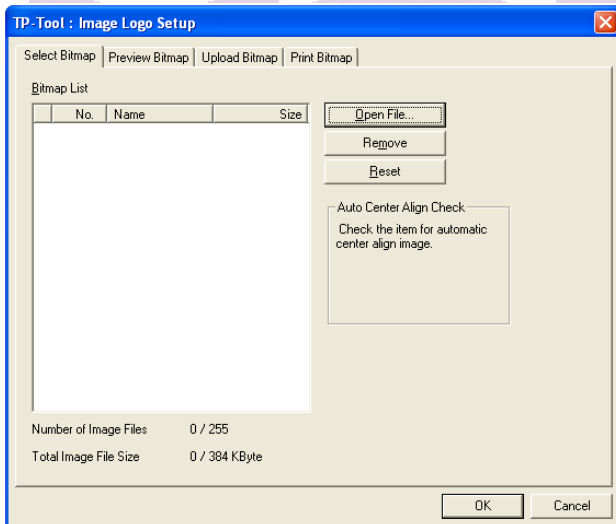
2) Function Select Dialog



Function Select Dialog

You can select a function button as you want to use.

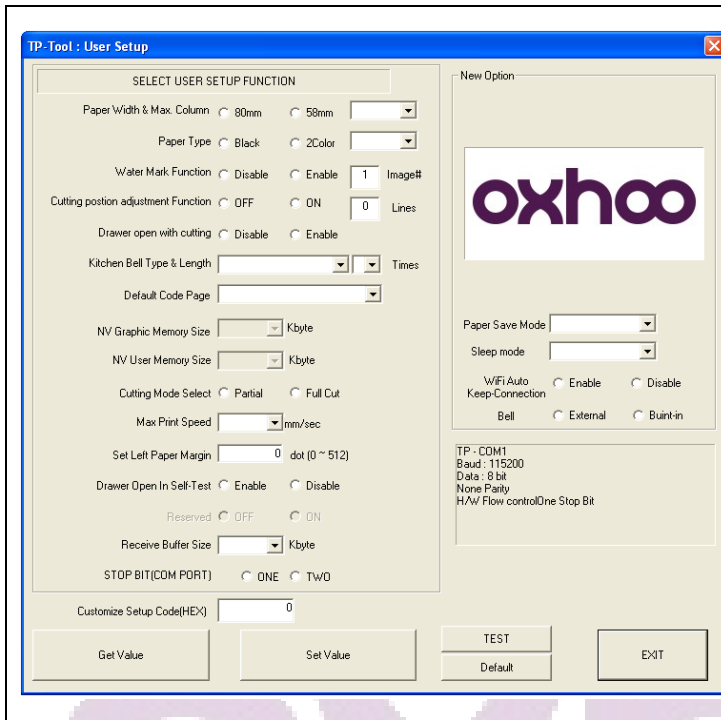
3) NV Logo Download Dialog



NV Image Logo Download Dialog

It is consisted with four property pages which are Select, Preview, Upload, Print Bitmap tab.

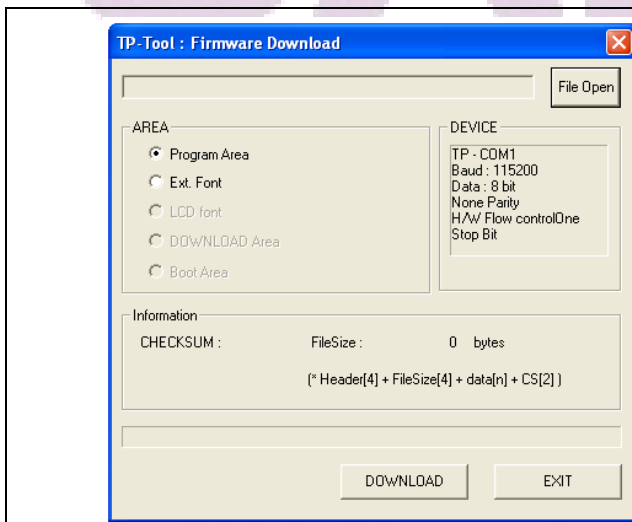
4) User Setup Dialog



User Setup Dialog

You can change variable custom settings only for TP series.

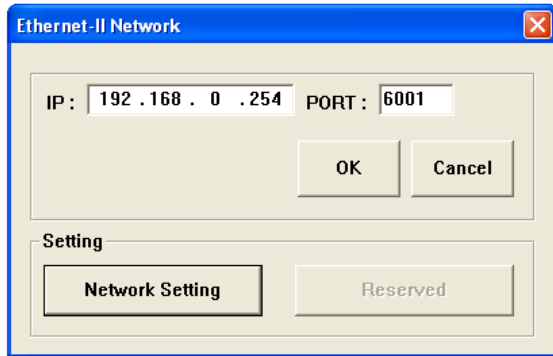
5) Firmware Download Dialog



Firmware Download Dialog

You can update printer's firmware.

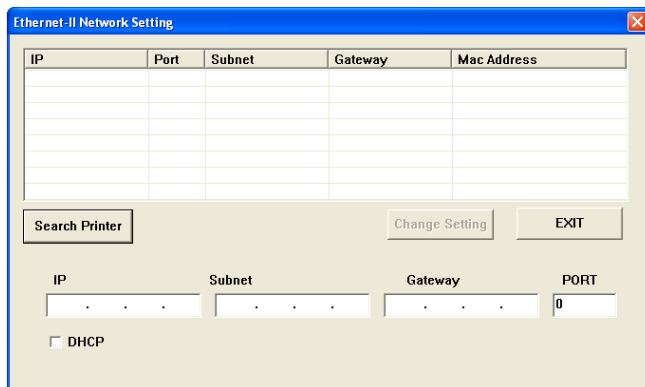
6) Network Setting Dialog (Ethernet-II Interface)



The dialog box titled "Ethernet-II Network" has a blue title bar with a close button. It contains two input fields: "IP:" with the value "192.168.0.254" and "PORT:" with the value "6001". Below these are "OK" and "Cancel" buttons. A "Setting" section at the bottom contains two buttons: "Network Setting" and "Reserved".

Ethernet-II Network Dialog

If you enter IP and Port number, You can access Ethernet-II interface.

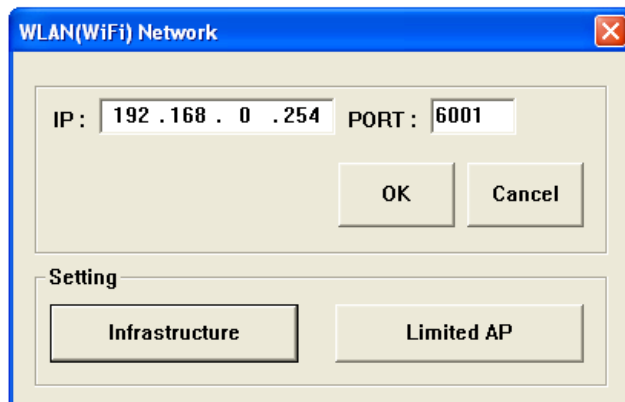


The dialog box titled "Ethernet-II Network Setting" has a blue title bar with a close button. It features a table with 5 columns: IP, Port, Subnet, Gateway, and Mac Address. Below the table are buttons for "Search Printer", "Change Setting", and "EXIT". At the bottom, there are input fields for "IP", "Subnet", "Gateway", and "PORT" (with a value of "0"), and a checkbox for "DHCP".

Ethernet0II Network Setting Dialog

You can change a printer network setting.

7) Wi-Fi Network Setting Dialog (Wi-Fi Interface)



The dialog box titled "WLAN(WiFi) Network" has a blue title bar with a close button. It contains two input fields: "IP:" with the value "192.168.0.254" and "PORT:" with the value "6001". Below these are "OK" and "Cancel" buttons. A "Setting" section at the bottom contains two buttons: "Infrastructure" and "Limited AP".

Wi-Fi Network Dialog

If you enter IP and Port number, You can access Wi-Fi interface.

WLAN Setup Dialog Ver.1.06

VCOM Port:

Info:

SSID	CHANNEL	TYPE	RSSI	SECURITY

NETWORK SETTING

SSID: PASSWORD: SECURITY: PORT:

IP: SUBNET: GATEWAY:

Infrastructure Dialog

You can change a printer Wi-Fi network setting for Infrastructure..

WLAN AP Network Setting Dialog Ver 1.06

VCOM Port:

AP SETTING

AP NAME: PASSWORD: CHANNEL:

IP: SUBNET: GATEWAY:

MAC ADDRESS: PORT:

Limited AP Dialog

You can change a printer Wi-Fi network setting for Limited AP..

3. Description of each functions

1) Logo download

Logo download function can be used for image downloading to NV (Non-Volatile) memory of TP printer or for image printing from it.

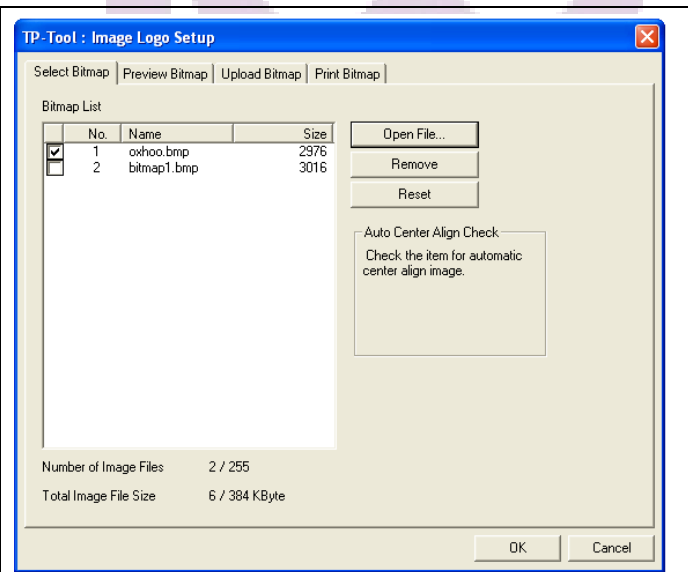
(1) General feature

1. Maximum memory capacity: 384Kbyte
(It depends on NV graphics memory size of User Setup. TP-30/35 is fixed 128Kbyte.)
2. Total logo count : Maximum 255
3. Automatic center align
4. Black/White diverging point
5. Image data format : Changeable to a file
6. Gray Scale Image printing support.

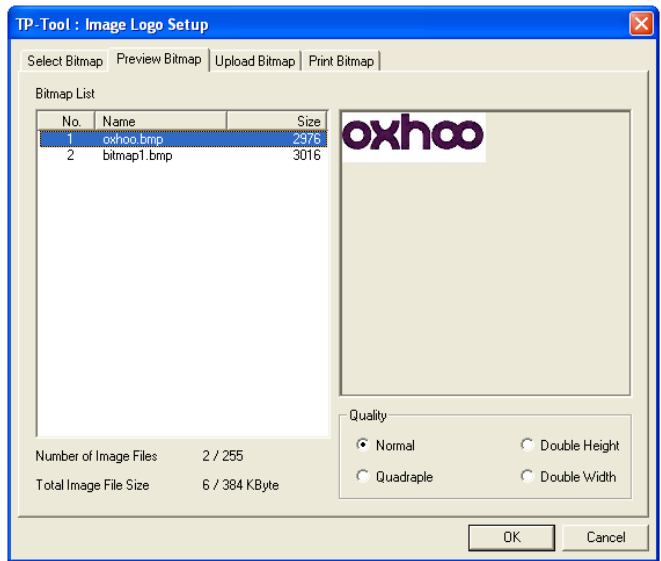
(2) Logo registration sequence

- ✓ Select the bitmap file stored in a printer.
- ✓ If you want to save with "Automatic center align" feature, check the checkbox located at the head of Bitmap No. like a red square.

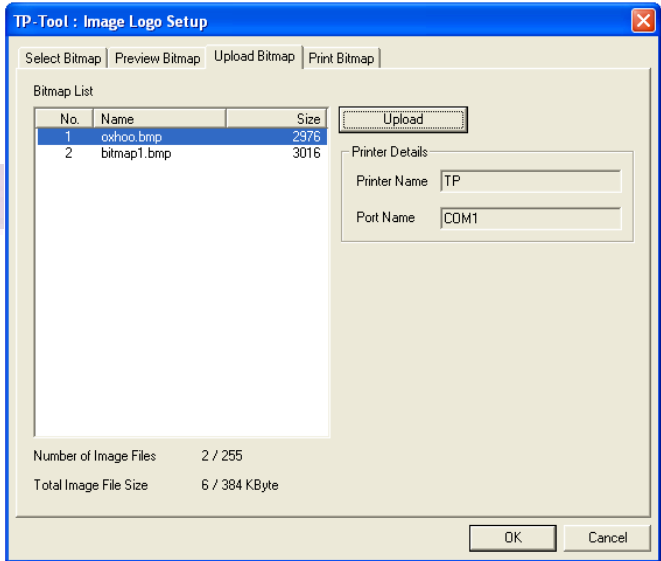
Note) It is very useful the case of printing a small logo image.



- ✓ At Preview Bitmap tab, you can see the logo file you selected.



- ✓ If you press the Upload button, the Bitmap image data will be downloaded in the NV graphics memory area of the connected printer. If uploading process finishes successfully, the printer feeds paper a little.



- ✓ You can specify the Printing Range for the logos uploaded in the printer's NV graphics memory area. Selectable choices are below :

All : Prints all logo images saved in the printer connected currently.

Selection : Prints the selected logo image saved in the printer connected currently. Selection range can be from 1 to 255. But you can select multiple logo-images by using ',' or '-' in the edit box.

(e.g. "1,5,10" or "1-5,8,20-22")

- ✓ You can specify Quality.

Normal : Print in single height and width

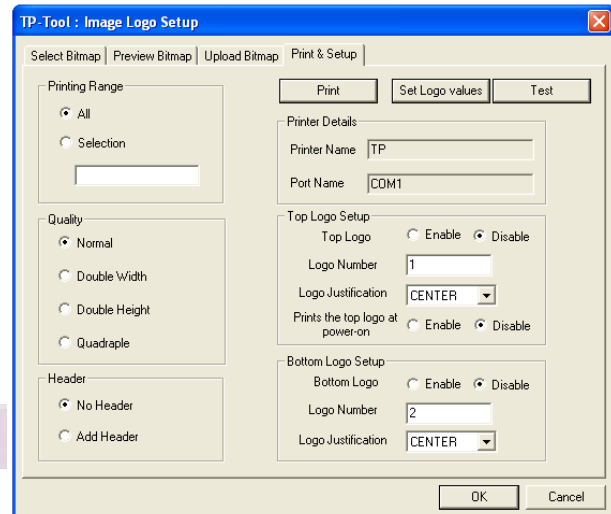
D/Width : Print in double width

D/Height : Print in double height

Quadruple : Print in double height and width

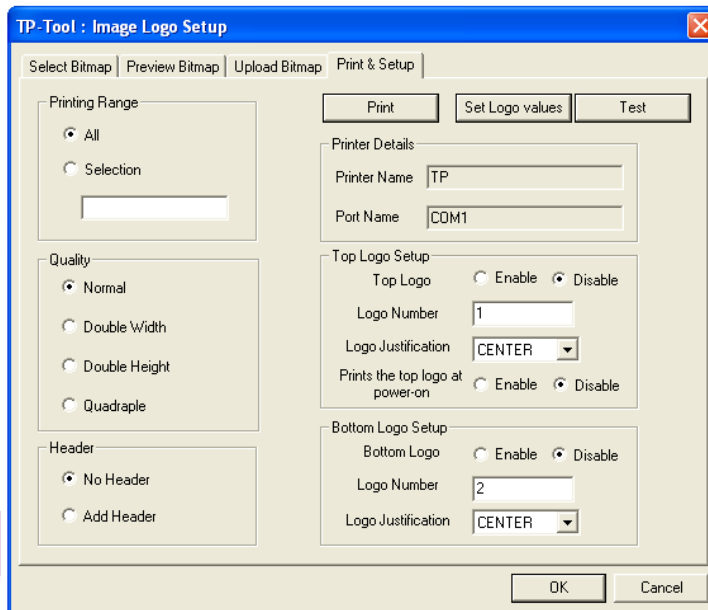
- ✓ You can select option with/without Header as a numbering value of the logo. It is printed on top of logo image.

- ✓ You can configure "Top/Bottom logo Setup" option.



(3)Top/bottom logo printing

You can specify the top/bottom logo printing in "Print Bitmap" tab. When use this function, you should use cutting command (ex : GS V m n).



Hideaway #2
16040 Cedar Ave S
Rosemount, MN 5588
(952)

04/15/11
6:28 pm

Order # 51
Customer # 0

Sales Person:

A1 Fakher	250g Cherry		
1 @	13.99 each	13.99*	
Sub-Total:		13.99	
Tax[7.125]:		1.00*	
Total:		14.99	

Total Paid: 0.00
Change: 0.00

Thank
You



[Top logo Setup]

- Top Logo : Enable/disable top logo printing
- Logo number : Sets top logo number.
- Logo Justification : Specifies left/ center/ right justification.
- Prints the top logo at power-on : Makes extended settings for top logo printing.

[Bottom logo Setup]

- Bottom Logo : Enable/disable bottom logo printing
- Logo number : Sets top logo number.
- Logo Justification : Specifies left/ center/ right justification.

2) User setup

TP-Tool : User Setup

SELECT USER SETUP FUNCTION

Paper Width & Max. Column ☐ 80mm ☐ 58mm

Paper Type ☐ Black ☐ 2Color

Water Mark Function ☐ Disable ☐ Enable 1 Image#

Cutting position adjustment Function ☐ OFF ☐ ON 0 Lines

Drawer open with cutting ☐ Disable ☐ Enable

Kitchen Bell Type & Length Times

Default Code Page

NV Graphic Memory Size Kbyte

NV User Memory Size Kbyte

Cutting Mode Select ☐ Partial ☐ Full Cut

Max Print Speed mm/sec

Set Left Paper Margin 0 dot (0 ~ 512)

Drawer Open In Self-Test ☐ Enable ☐ Disable

Reserved ☐ OFF ☐ ON

Receive Buffer Size Kbyte

STOP BIT (COM PORT) ☐ ONE ☐ TWO

Customize Setup Code (HEX) 0

New Option

Emulation ☐ EPSON ☐ STAR

Density

AutoCut ☐ ON ☐ OFF

SELF-TEST ☐ Self-Test ☐ HexaDump

Kitchen Bell ☐ OFF ☐ ON

USB mode ☐ USB ☐ COM

LCD Password ☐ Reset ☐ Don't touch

Paper Save Mode

Sleep mode

WiFi Auto Keep-Connection ☐ Enable ☐ Disable

Bell ☐ External ☐ Built-in

TP - COM1
Baud : 115200
Data : 8 bit
None Parity
H/W Flow controlOne Stop Bit

Get Value Set Value TEST Default EXIT

✓ About Buttons

[TEST]

You can test the printer and check the printer's setting. If you press this button, Printer prints out some characters and cuts the paper.

[Default]

Can reset to default values all of them.

[Get Value]

It queries the current setting values to the printer and shows those values on the dialog.

[Set Value]

It sets values with displayed on the dialog or selected of the printer.

[EXIT]

Quits this application and returns to Function Select Dialog.

(1)Description of User Setup Options

A. Paper Width & Max Column (Default : 80mm / 30 column In 58mm)

This is an option of the paper width for printing. It can be set the paper 58mm or 80mm width.

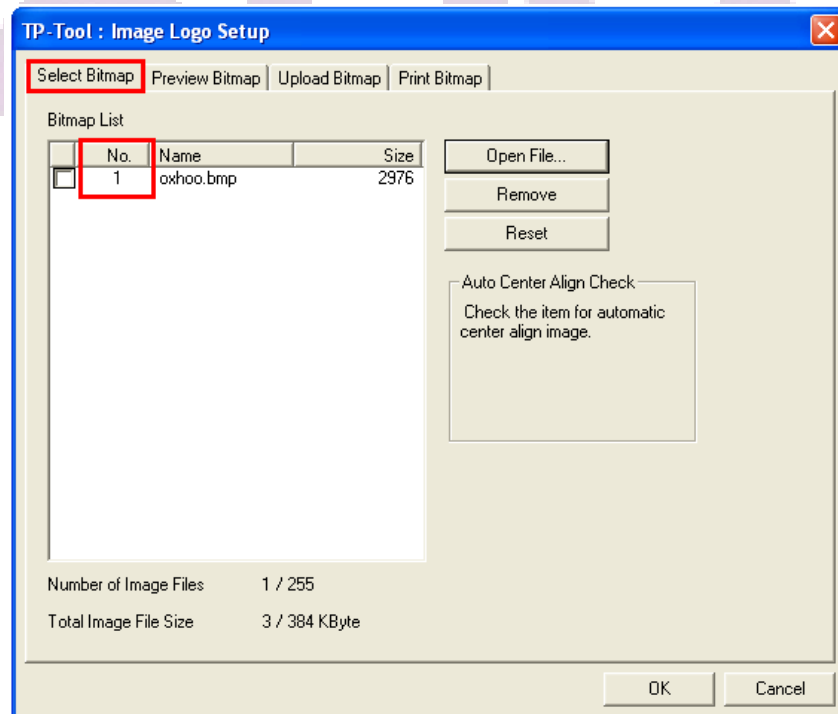
B. Paper Type and Black Density (Default : Black / Medium)

This is an option of the paper type. It can be set Black or 2Color. The second color can be red or blue by 2 color thermal paper type.

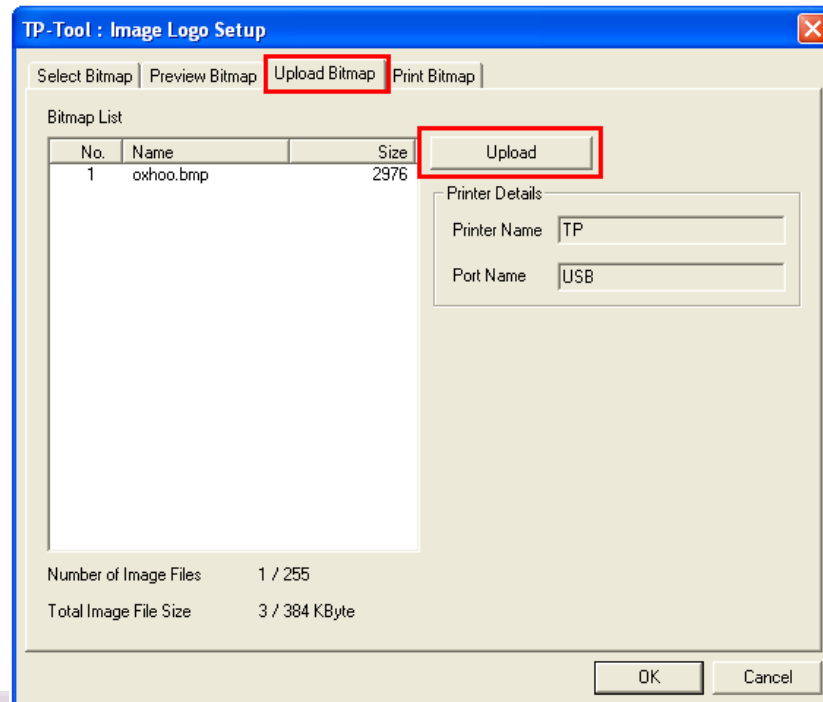
C. Water Mark Function (Default : Disable)

It is TP printer that prints background image on your receipt without any additional commands. You can use Watermark with Image Logo Downloader in TP-Tool. If you want to print background image, prepare the bitmap image which will be background. And then follow steps as below.

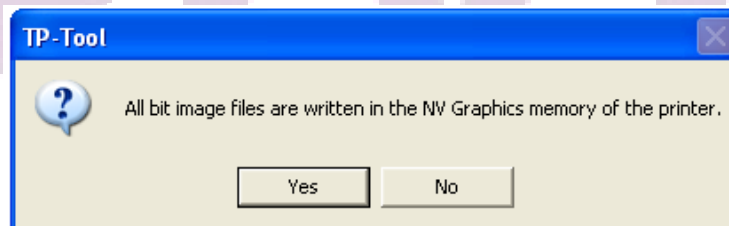
- ① Run Image Logo Downloader and select the prepared bitmap image. And check the image number.



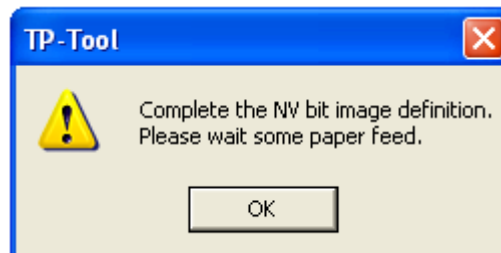
-
- ② Go to the "Upload Bitmap" tab and click the "Upload" button.



- ③ It will show the message box like below, click the "YES" button.



- ④ All of images saved before on the printer will be deleted and new image data will be downloaded on your printer.
- ⑤ Printer feeds some paper when the logo upload is completed successfully.



- ⑥ Close Image Logo Downloader and run User Setup from Function Select Dialog.
- ⑦ Set Enable of the Water Mark Function and input the number of logo image that you want to print as a background. (Refer step ①) And then click the "Set Value" button. The printer will be set values newly and Water Mark Function setting is finished.
-

TP-Tool : User Setup

SELECT USER SETUP FUNCTION

Paper Width & Max. Column ☐ 80mm ☐ 58mm

Paper Type ☐ Black ☐ 2Color

Water Mark Function ☐ Disable ☒ Enable Image#

Cutting position adjustment Function ☐ OFF ☐ ON Lines

Drawer open with cutting ☐ Disable ☐ Enable

Kitchen Bell Type & Length Times

Default Code Page

NV Graphic Memory Size Kbyte

NV User Memory Size Kbyte

Cutting Mode Select ☐ Partial ☐ Full Cut

Max Print Speed mm/sec

Set Left Paper Margin dot [0 ~ 512]

Drawer Open In Self-Test ☐ Enable ☐ Disable

Reserved ☐ OFF ☐ ON

Receive Buffer Size Kbyte

STOP BIT (COM PORT) ☐ ONE ☐ TWO

Customize Setup Code(HEX)

Get Value Set Value

- ⑧ Try to click the "TEST" button and you will see the fantastic receipt with background image. Left picture is the sample receipt that is applied the Water Mark Function. Right one is bitmap image that is used as a background image.



D. Cutting position adjustment Function (Default : Disable / 0 Line)

If your receipt is cut wrong, this option will be very useful with you, it makes the application not change. When this option set to enable, printer will feed amount (line number input) of paper before cutting.

E. Drawer open with cutting (Default : Disable)

This option will make drawer take an open-signal when printer is received the paper cutting command.

F. Kitchen Bell Type & Length (Default : High / 1 times)

TP Printer offers one bell and three melodies for using on kitchen. It is possible to adjust ringing time or length of melody.

The offered bell types are below.

Tone: Medium, High, Low tone Beep

Bell : Four different tone Beep

Other Bell(DK1/2): Blend bell (Internal oscillation type)

G. Default Code Page (Default : PC437-USA, Standard Europe)

If you want to fix the specified code page as default, select one of code pages in the list and then click the "Set Value" button.

H. NV Graphic Memory Size (Default : 384Kbytes)

TP printer has NV (Non-volatile) memory area for saving graphics and user data. The NV Graphic memory size is 384Kbytes maximum and is 0byte minimum. You can take this size freely with this option. But it must be set in a range from 0 to 384Kbytes.

Note) Total size of NV memory (NV graphic and NV user memory) is 448Kbytes. Even if you will set the amount over 448Kbytes, it will be automatically set to possible size.

(TP-30/35 is fixed 128 Kbytes)

I. NV User Memory Size (Default : 64 Kbytes)

TP printer has NV (Non-volatile) memory area for saving graphics and user data. The NV Graphic memory size is 320Kbytes maximum and is 64Kbytes minimum. You can take this size freely with this option. But it must be set in a range from 64 to 320Kbytes.

Note) Total size of NV memory (NV graphic and NV user memory) is 448Kbytes. Even if you will set the amount over 448Kbytes, it will be automatically set to possible size. (TP-30/35 is fixed 64 Kbytes)

J. Cutting Mode Select (Default : Partial Cut)

You can choose one type of cutting between partial cut (with un-cut point in a center of paper) and full cut.

K. Max Print Speed (Default : 270 mm/s or 230mm/s)

If printer, especially machine is fast and data transfer-speed is low, that is, two of them have speed mismatched. This case may be cause of an intermittent printing. You can control print speed from this option for better printing, e.g. smooth printing.

L. Set Left Paper Margin (Default : 0 dot)

Left margin of paper is changeable for better receipt (printed) shape. For example, if you are using 40-column-format receipt on TP printer, you may be seen a print-result tended to left side. In this case you can take much better result, if you set 24-dots which is the value of left margin.

M. Drawer Open In Self-Test (Default : Disable)

Check the drawer operation at print self-test mode.

N. Received Buffer Size (Default : 4Kbytes)

TP printer's received buffer can be 64Kbytes maximum. You can change buffer size with this option.

O. Stop Bits (COM) (Default : ONE)

Stop bits used during serial communication can be changed.

P. Customize Setup Code (Default : 0)

You can enter a Customize Setup Code .

(2)New Option

Some New Option is designed for TP printer that does not have dip switches.

(Only TP-40/45 LCD type : *)

A. Emulation (Default : EPSON) *

Select a printer's emulation mode.

B. Density (Default : Level 2) *

Select a Printer's paper density level.

C. Kitchen Bell (Default : OFF) *

Select whether to use Kitchen Bell.

D. Auto Cut (Default : ON) *

Select whether to use Auto Cut.

E. Self-Test (Default : Self-Test) *

Turn on the power while holding down the FEED button. The self-test begins.

This option selects a self-test mode. (HEXADECIMAL DUMP MODE, Self-Test mode)

F. USB mode (Default : USB) *

Select whether to use a USB mode.

(When this option changed, please restart TP-Tool).

G. Sleep mode (Default : OFF)

Set a sleep mode. Default value is OFF.

H. Paper save mode (Default: OFF)

Set a Paper save mode. This mode saves paper.

I. LCD Password (Default: Don` t touch)

Reset LCD password value. (Only use LCD model)

J. Wifi Auto Keep-Connection (Default: Disable)

When abnormal disconnect is occurred, this option will be reduced re-connection time.

K. Bell (Default: External)

Set a kitchen bell to output the melody.

L. Bluetooth PWR form USB (Default : OFF)

Set the function of applying power to the Bluetooth module.

M. Upside-down (Default : Disable)

Set the function of upside-down print per page. (Max : 30cm page length)

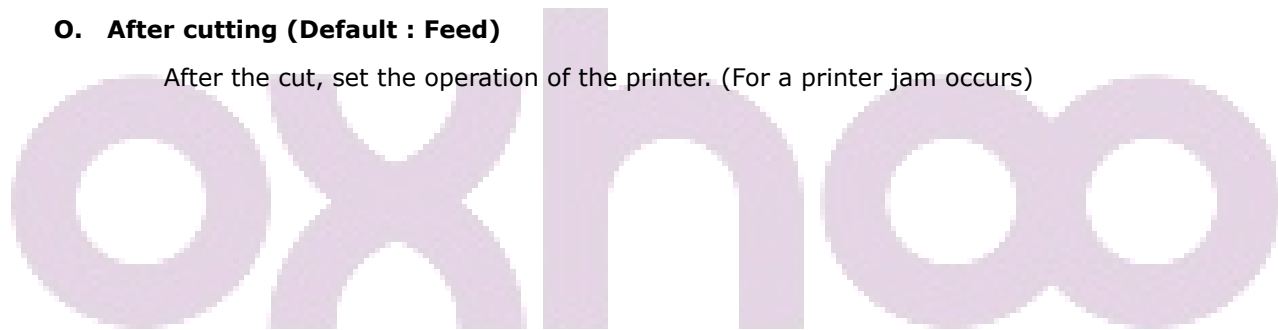
If WaterMark/Two Color/Top & bottom logo function is on, this function is impossible to use.

N. Bell Play Time (Default : Max)

Set the maximum duration of a kitchen bell melody.

O. After cutting (Default : Feed)

After the cut, set the operation of the printer. (For a printer jam occurs)



3) Firmware download (Using TP-Tool)

(1) TP-30 / TP-40 / TP35 / TP-45 series

Firmware update sequences are below.

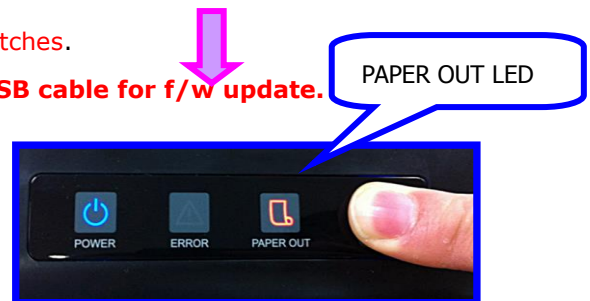
1. Remember folder directory with downloaded firmware file.
2. Turn the printer off.
3. Check the cable connection between printer and your PC .



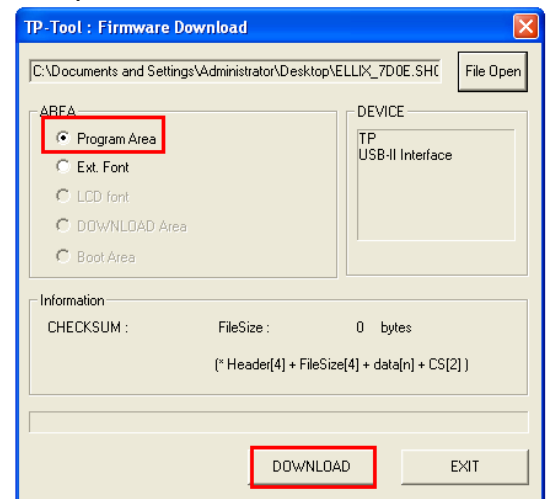
If a printer have dip Switches, please turn off all dip switches.

When printer interface is WLAN, please connect USB cable for f/w update.

4. Open the printer cover.
5. Turn on printer with FEED button; hold the feed button until the PAPER LED is ON. LCD model printer displays a message as shown.
6. Now, Printer is ready to update firmware. (*Download mode)
7. Run the "Firmware Update Dialog" on TP-Tool and open the downloaded firmware file.
8. And then, select the download area which you want to update. (generally select the "Program area")

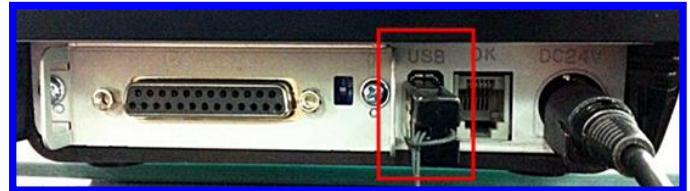


9. Select the connected port on your PC. (Already selected on TP-Tool)
10. If you click the download button, the firmware update will be started and this application will show the status with progress-bar on dialog bottom side.
(If progress-bar does not proceeding well, when you click download button, you should check 'Port Select' or cable connection whether settings are correct or not.)
11. If download is done, printer will notify download completion with 5 times buzzer. (in surely case that download is succeeded). And then turn off a printer.
 - If buzzer does not ring that means communication ERROR is occurred during download. In this case, please check Cable connection status (It should be fasten – Normal).
12. Please try to operate 'SELF TEST' and check the updated firmware version.



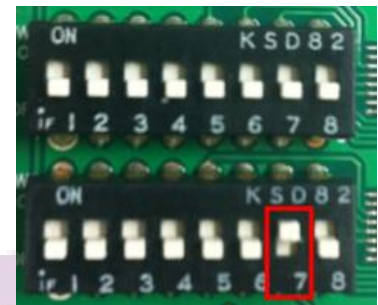
4) Firmware download (Using USB memory stick)

1. Format a USB memory stick to FAT file system.
2. Copy the firmware file to USB memory stick.(No folder)
3. Turn off a printer. And then connect a USB memory stick to printer USB port.



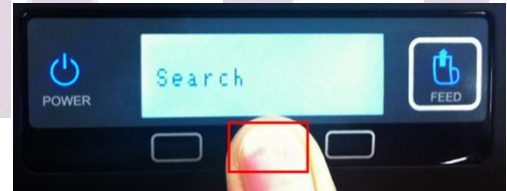
4. With dip switch:

Turn on the switch 7th of dip switch 2nd. Open the printer cover. Turn on a printer with holding the FEED Button. After 2 seconds, Release the FEED button.



With LCD display:

Open the printer cover. Turn on a printer with holding the Button 2 of LCD display. After 2 seconds, Release the FEED button.



5. If firmware update is done, printer will notify update completion with 3 times buzzer. (in surely case that download is succeeded). And then turn off a printer.
6. Do self-test for confirming the updated firmware version.

- **Does not support this feature, the printer boot version less than 1.10**
- Depending on the version of the boot loader, it has the following limitations
(Except **TP35II / TP45II**)
 - ⇒ Boot loader(1.14 or less) : Updatable range is max 2.09 printer firmware version.
 - ⇒ Boot loader(1.15 or more) : Updatable range is from 2.10 printer firmware version.

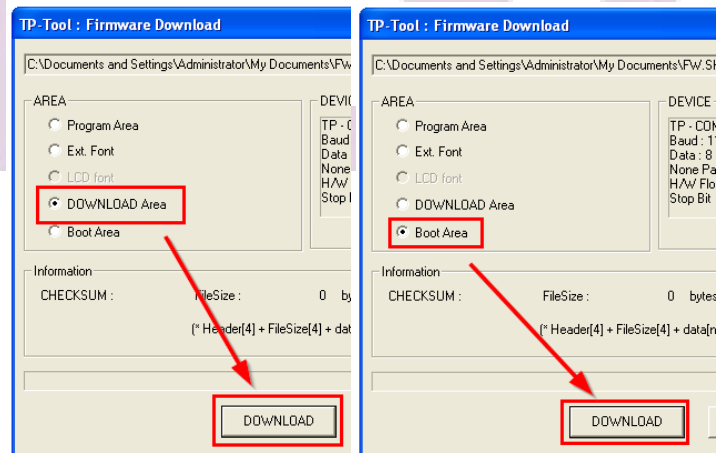
5) Firmware download (BOOT, Downloader)

Many features has been added from firmware version 2.10. So you want to update to firmware 2.10 or higher than 2.09, you must follow the following steps (this procedure is that once you upgrade from older versions).

1. Proceed to 1 to 6 procedures of " 3) Firmware download (Using TP Tool) ".
2. Run the TP Tool utility (Ver 1.30 or higher) and set to the interface and the press the OK button.
3. Hold down the CTRL button on the left side of the keyboard, press the "Firmware Download" button.



4. When the Firmware Update dialog, click the "Open" button to select the latest firmware version 2.10 or more.
5. Select "Download Area" and click the "Download" button. When the update is complete, the buzzer will beep five times. **Do not turn off the power during the update.**
6. When the "Download Area" update is complete, turn off the printer.
7. Open the cover and turn on the power while pressing the paper feed button. In other words, run the download mode.
8. Select the "BOOT Area" in the Firmware Update dialog, and then click on the "Download" button. **Do not turn off the power during the update.**
9. When you have completed the update to the "BOOT Area", update the "Program Area" for complete with all updates.



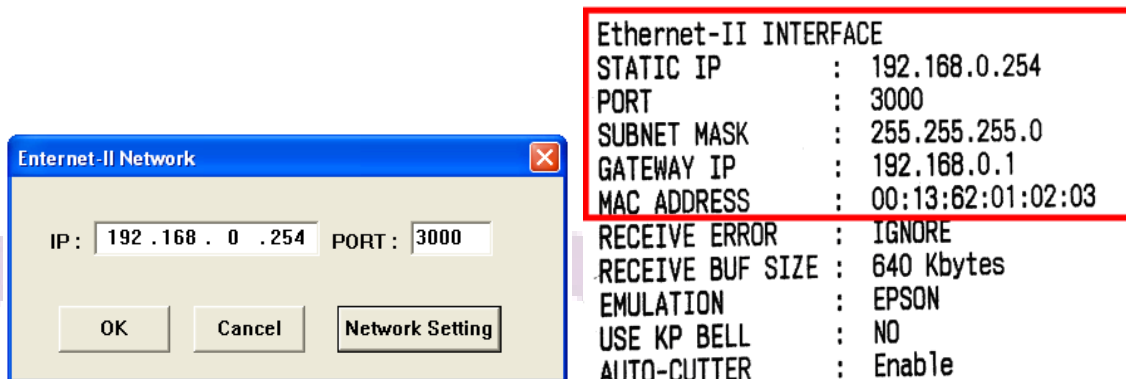
Note: Updated the boot loader and downloader cannot be downgraded. If this is the first update from the previous version(2.09 or less) to the new version(2.10 or more), please re-set the user setup.

6) Network Setting Dialog (Ethernet-II Interface)

(1) Ethernet-II Network Dialog

When you selected a Ethernet-II In the "Device Configuration Dialog" and pressed OK button, Ethernet-II Network Dialog is appears. Enter the IP address and port number to connect. Press the OK button. Function Select Dialog will be executed.

In addition, you can select the "Ethernet-II Network Setting dialogue" It can change the network settings for the printer. Do you want to check printer's IP and Port number? Please run the Self-Test. You can confirm all the settings of the printer.

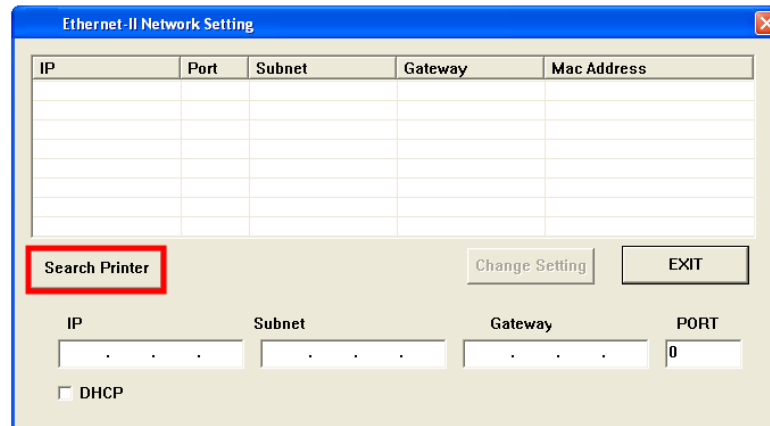


(2) Ethernet-II Network Setting Dialog

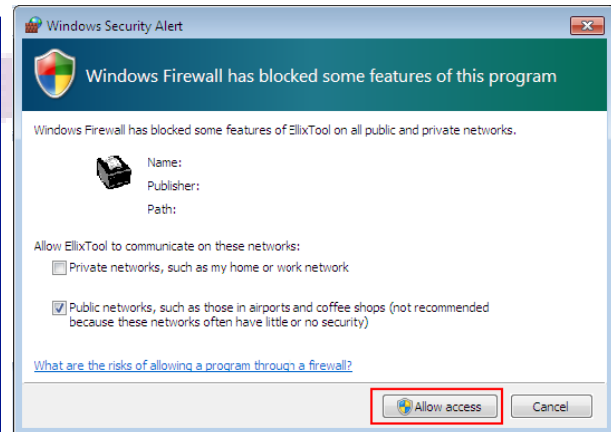
Here you can change the network settings for the printer. If you would like to change the network settings, please follow these steps.

1. The printer is connected to the router. PC must be connected to the same router.
2. Turn on printer normally.

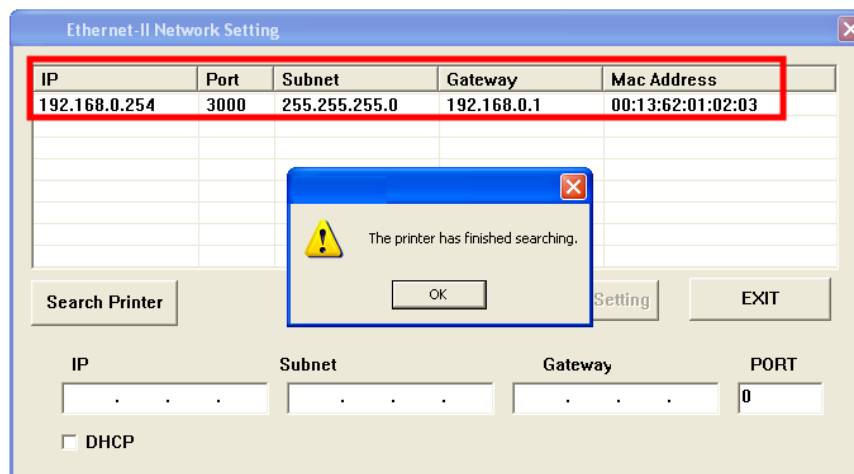
3. Run the "Ethernet-II Network Setting Dialog." Press the "Search Printer" button



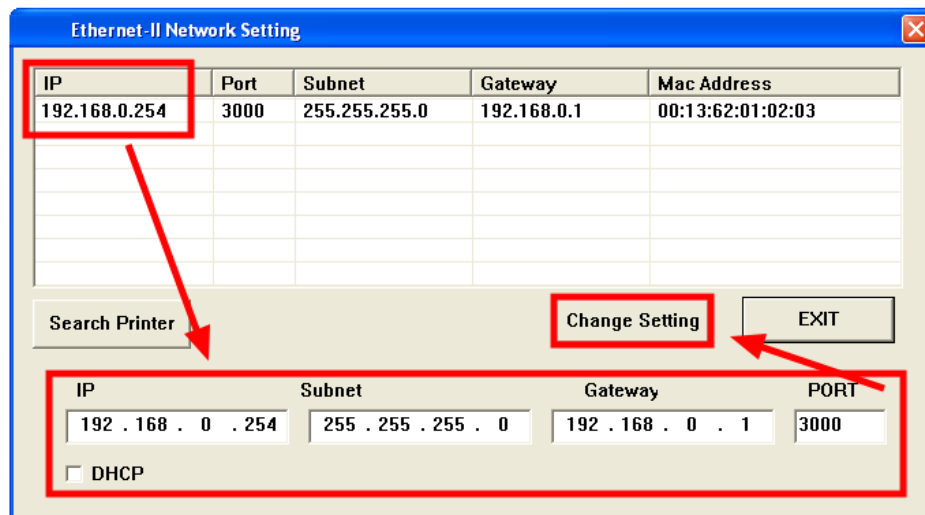
4. If you can see the "Windows Security Alert" message, Click a "Unblock" button (Windows XP) or "Allow access" button (Windows 7). And retry the 3 Step.



5. If you can see the "The Printer has finished searching." message, detected the printer's network settings appear. (If you cannot see any list, Please check cable and network.)



6. Choose one to change the IP. Enter the network settings you want (as shown). Finally, press the "Change setting" button.

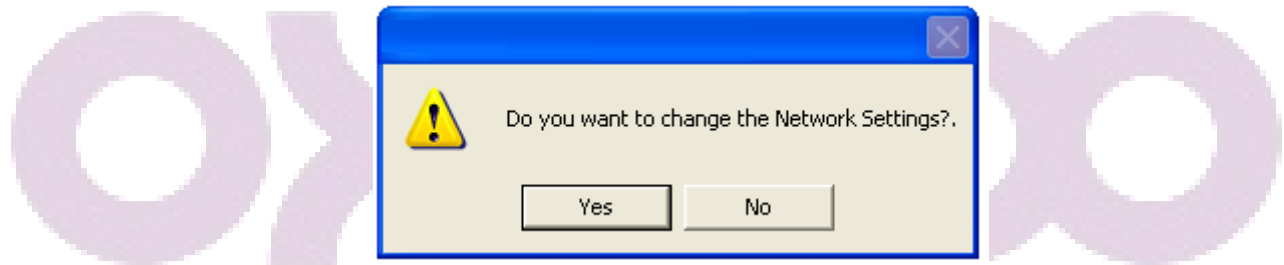


The dialog box titled "Ethernet-II Network Setting" contains a table with the following data:

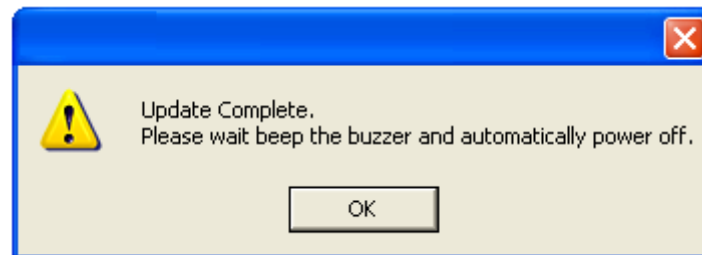
IP	Port	Subnet	Gateway	Mac Address
192.168.0.254	3000	255.255.255.0	192.168.0.1	00:13:62:01:02:03

Below the table are three buttons: "Search Printer", "Change Setting", and "EXIT". A red box highlights the "Change Setting" button. Below the buttons is a form with four input fields: "IP" (192 . 168 . 0 . 254), "Subnet" (255 . 255 . 255 . 0), "Gateway" (192 . 168 . 0 . 1), and "PORT" (3000). A red box highlights these fields. There is also a checkbox for "DHCP" which is unchecked.

7. You can see the "Do you want to change the Network Setting?" message. Press the "Yes" button.



8. Printer will notify update completion with buzzer, and then printer will be restart.



9. Do self-test for confirming the updated network setting.
10. If it is not progress as expected above procedure, please use USB communication for TCP / IP settings.

Turn off the power to the printer, please connect the USB cable to the PC and printer. Then, after you turn on the printer, please try again from 3 step.

(This feature will support F/W version 2.05 and TP Tool version 1.3.0 or higher.)

(3)Web Server

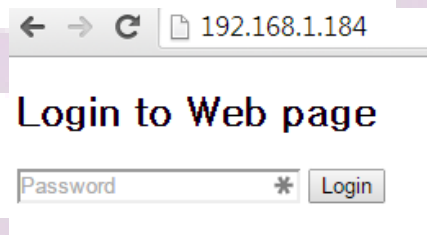
Only firmware version 2.10 or later TP30/40/35/45 Ethernet interface supports the Web server. Function provided by the Web server are as follows. (Function that supports every version of firmware, may be different.)

<Notice>

- Web server, has been optimized to Chrome browser. In addition, in accordance with the state of the other browsers and network, screen display may be different.
- For reliable management, as far as possible, please be used in situations where you do not have printing.

<Login Screen >

- In the address bar of your web browser: When "http // printer's ip" to enter, you will be able to connect to the printer. Master password is 0821.



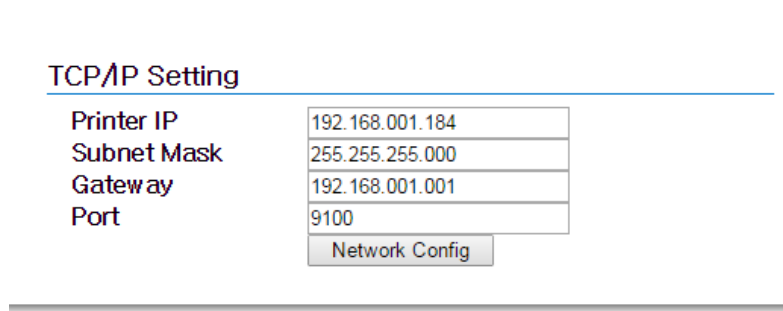
<General Information Screen >

- Network information of the printer, the version of the firmware, you will be able to check the status.

General Information	
<u>Network Information</u>	
Printer IP	192.168.001.184
Subnet Mask	255.255.255.000
Gateway	192.168.001.001
Port	9100
MAC Address	00.13.62.01.A3.6E
<u>Printer Information</u>	
Printer Version	STD 2.09
<u>Check Status</u>	
Printer Status	IDLE
	<input type="button" value="Refresh"/>

<TCP/IP Setting Screen >

- You can change the network settings, such as the printer of IP. The changed setting is not apply till when you restart.




TCP/IP Setting

Printer IP	192.168.001.184
Subnet Mask	255.255.255.000
Gateway	192.168.001.001
Port	9100

Network Config

<User Setup Screen >

- You can change the basic code page, Kitchen Bell settings and receive buffer of the printer.
- After the setting, the printer will be restarted.



User Setup

Kitchen Bell

Kitchen Bell Type ☒ Bell ☐ Melody 1 ☐ Melody 2 ☐ Melody 3

Kitchen Bell Times 3 times ▼

Kitchen Bell Output ☐ Board Buzzer ☒ Internal Bell

Communication

Received Buffer Size ☒ 4 Kbyte ☐ 20 Kbyte ☐ 32 Kbyte ☐ 64 Kbyte

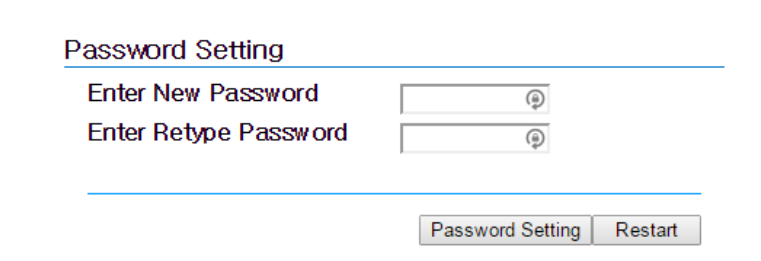
Printing

Default Code Page PC437 (USA, Std Europe) ▼

Set Values

<Password Setting Screen >

- You can re-configure the printer password. (Master password will not be changed.)
- When you press the Restart button, you can manually re-start of the printer.



Password Setting

Enter New Password

Enter Retype Password

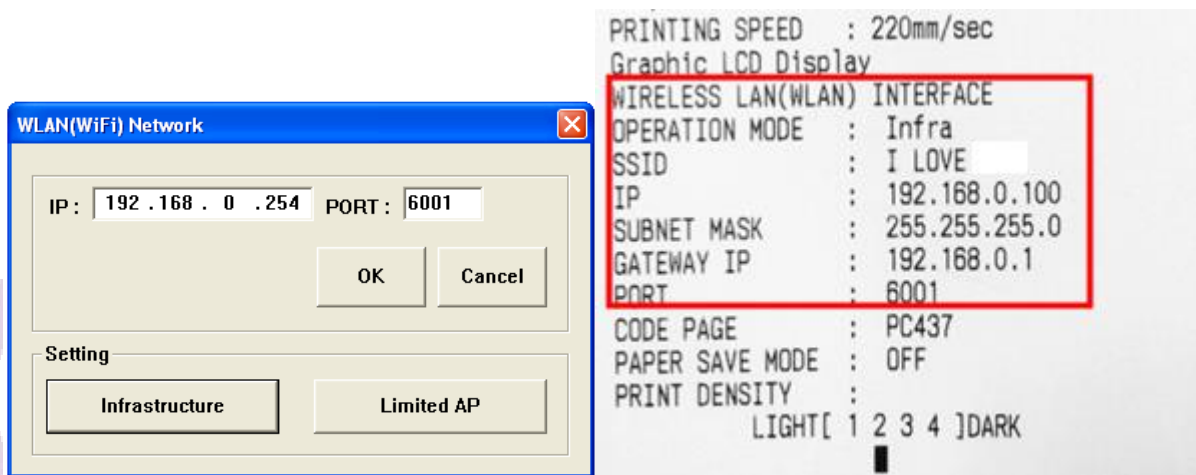
Password Setting Restart

7) Network Setting Dialog (Wi-Fi Interface)

(1) Wi-Fi Network Dialog

When you selected a WLAN(Wi-fi) In the "Device Configuration Dialog" and pressed OK button, Wi-Fi Network Dialog is appears. Enter the IP address and port number to connect. Press the OK button. Function Select Dialog will be executed.

In addition, you can select the "Infrastructure Dialog" and "Limited AP Dialog". It can change the network settings for the printer. Do you want to check the printer IP and Port number? Please run the Self-Test. You can confirm all the settings of the printer.



(2) Glossary of Terms

AP (Access Point)

AP, actually as a device is a hotspot that is like an Ethernet hub. It can be possible to communicate, which is binding one network with wireless clients (devices) nearly located in AP. And it can be possible to connect to WAN, backbone or another AP (hotspot) through the Ethernet line connected with one AP.

Infrastructure

If several terminals (PC, PCPOS etc.) or clients connect to one AP and they are composed to the same network, this is called 'infrastructure'. In other words, infrastructure is a structure that WLAN interface connects with PC or terminals through AP.



Limited AP

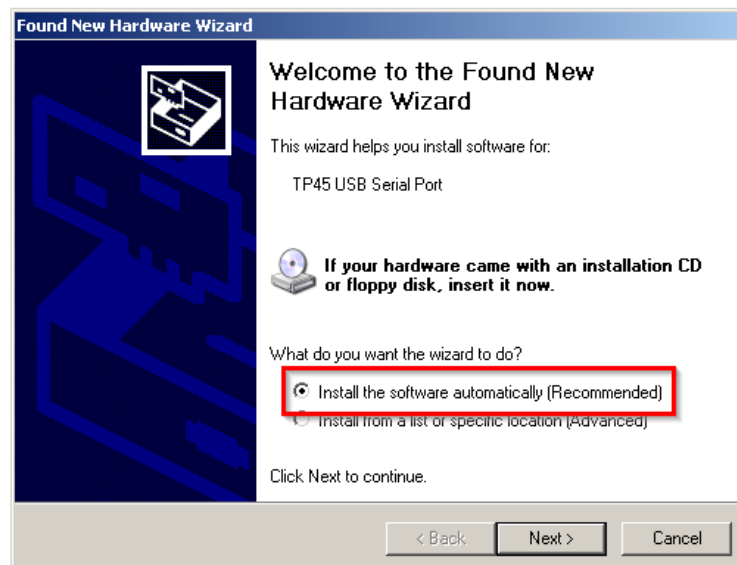
Limited AP, which WLAN interface is become AP by itself, can be possible to communicate directly with other terminals (PC, PCPOS etc.) or clients without any other APs.



(3)Install a Virtual COM Driver (Windows XP, POSReady 2009)

Virtual COM port driver must be installed when WLAN Interface sets up. During installation, Please do these steps are following.

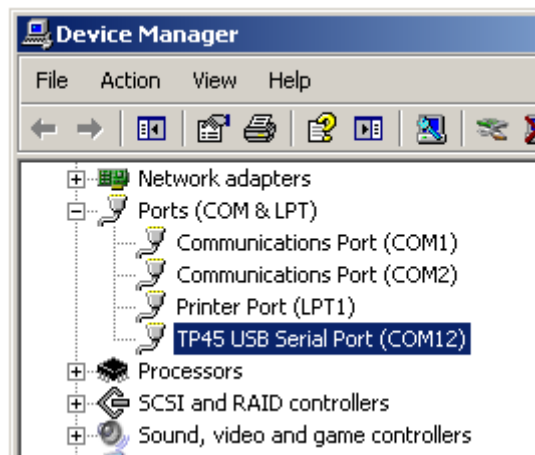
1. Turn a printer off.
2. Install Printer Driver for installing virtual COM driver automatically.
Please refer to the manual of Printer Driver Installer
(Select a connection type of the printer: ETHERNET CONNECTION
Create a TCP/IP Printer Port : The value for use later)
3. Connect a USB cable to printer and PC.
4. Turn a printer on.
5. When "Found New Hardware Wizard" is appeared, select a "Install the software automatically(Recommended)"



6. Select a "Continue Anyway" Button.



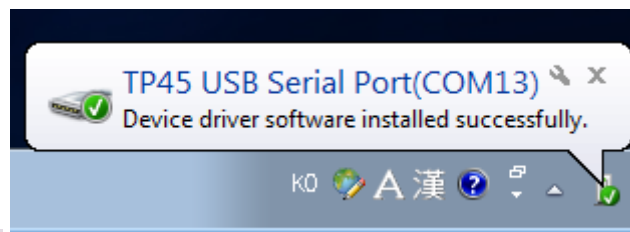
7. When the installation is completed, run the "Device Manager" for checking a New Virtual COM port number.



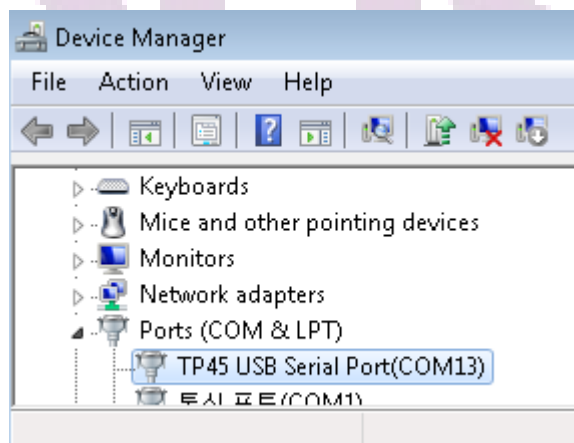
(4)Install a Virtual COM Driver (Windows 7, POSReady 7)

Virtual COM port driver must be installed when WLAN Interface to set up. During installation, Please proceed as follows, depending.

1. Turn a printer off.
2. Install Printer Driver for installing virtual COM driver automatically.
Please refer to the manual of Printer Driver Installer.
(Select a connection type of the printer: ETHERNET CONNECTION
Create a TCP/IP Printer Port: The value for use later)
3. Connect a USB cable to printer and PC.
4. Turn a printer on.
5. When Virtual COM port is installed properly in Windows, this balloon appears as shown.



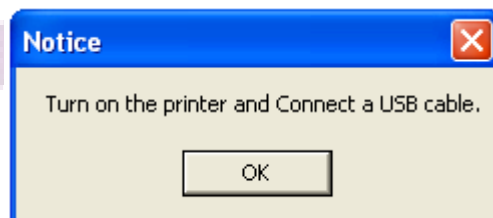
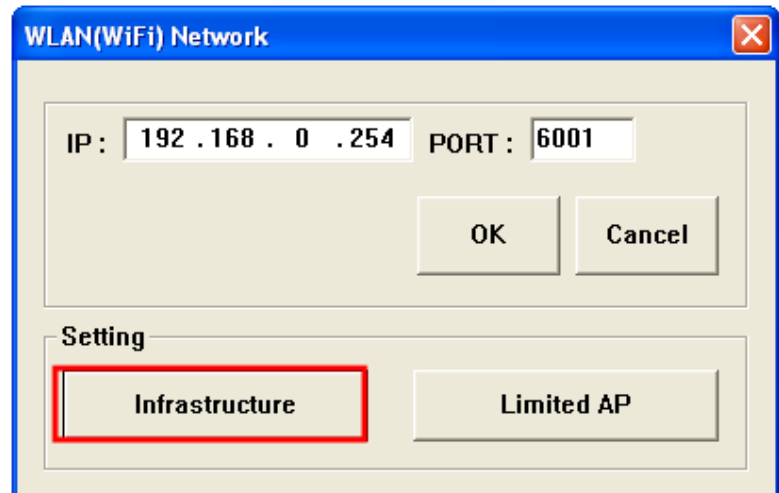
6. When the installation is completed, run the "Device Manager" for checking a New Virtual COM port number.



(5) Infrastructure mode setting

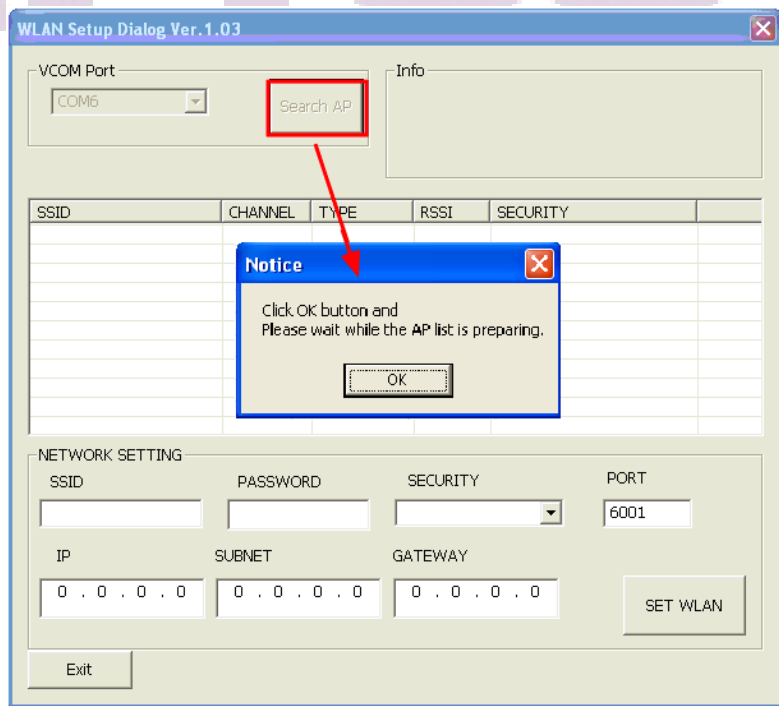
Click "**Infrastructure**" Button in Wi-Fi Network dialog.

When message box is appeared, turn a printer on and then connect USB cable PC and printer.



Click "**Search AP**" button to search AP list.

When message box is appeared, click "OK" button.



When "Search AP" is completed,
WLAN interface information and
list of around the AP devices appear .

- SSID : AP Name
- CHANNEL: Communication
 channel
- TYPE : Operation mode
- RSSI : Received signal strength
 indication
O: Weak signal
OO : Normal signal
OOO : Strong signal

WLAN Setup Dialog Ver.1.03

VCOM Port: COM6 Search AP

Info: SSID : WizFi2xx18878c Security : NONE
IP : 192.168.1.101
Subnet : 255.255.255.0
Gateway : 192.168.1.1

SSID	CHANNEL	TYPE	RSSI	SECURITY
HelloWireless	10	INFRA	O	WEP
iptime	11	INFRA	O	NONE
NETGEAR-JY	11	INFRA	O	WPA-PERSONAL
HARDWARE	11	INFRA	OO	WPA2-PERSONAL
SAM4S3	11	INFRA	O	WPA-PERSONAL
HelloDial LAP	11	INFRA	OO	WEP
KIC	12	INFRA	O	WEP
OUTRIDER	12	INFRA	OO	WPA2-PERSONAL
TANGTANG	13	INFRA	O	WPA-PERSONAL
ALNetwork	13	INFRA	OO	WEP

NETWORK SETTING

SSID: [] PASSWORD: [] SECURITY: [] PORT: 6001

IP: 192.168.1.101 SUBNET: 255.255.255.0 GATEWAY: 192.168.1.1

SET WLAN

Exit

Select the SSID of AP which you want to
connect. **(You must select Normal or
Strong signal SSID for a safety
communication.)**

If you need a password for connection,
enter a PASSWORD.

**If the security of SSID is WEP, you
need to select WEP Encryption key.**

Enter the Network setting values (IP,
SUBNET, and GATEWAY) that are
assigned from the **network
administrator**. And then click "SET
WLAN" button.

WLAN Setup Dialog Ver.1.03

VCOM Port: COM6 Search AP

Info: SSID : WizFi2xx18878c Security : NONE
IP : 192.168.1.101
Subnet : 255.255.255.0
Gateway : 192.168.1.1

SSID	CHANNEL	TYPE	RSSI	SECURITY
jihun	03	INFRA	OOO	WEP
Butterbong	01	INFRA	OO	WPA2-PERSONAL
HD_NOTE	06	INFRA	OO	WPA2-PERSONAL
ALS LAB	06	INFRA	OO	WPA-PERSONAL
SAM4S	07	INFRA	OO	WEP
zic	08	INFRA	OO	WPA2-PERSONAL
BCNG	09	INFRA	OO	WEP
HARDWARE	11	INFRA	OO	WPA2-PERSONAL
HelloDial LAP	11	INFRA	OO	WEP
OUTRIDER	12	INFRA	OO	WPA2-PERSONAL
ALNetwork	13	INFRA	OO	WEP

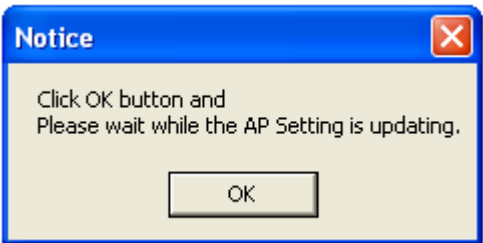
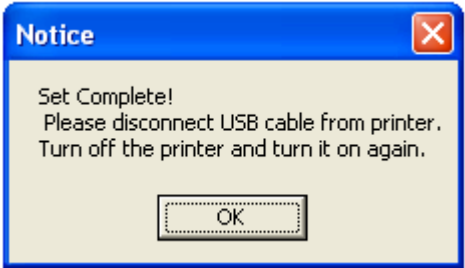
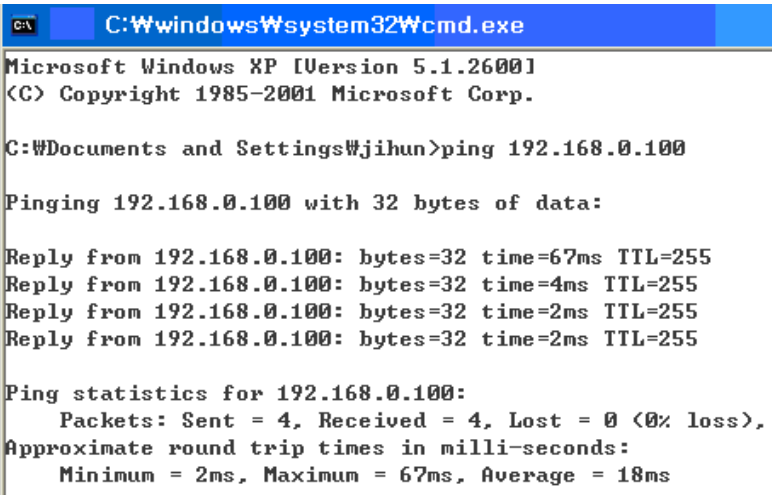
NETWORK SETTING

SSID: JYW_WIFI PASSWORD: 1234567890 SECURITY: WPA2 WEP Encryption Key: []

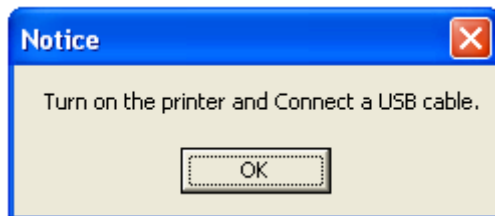
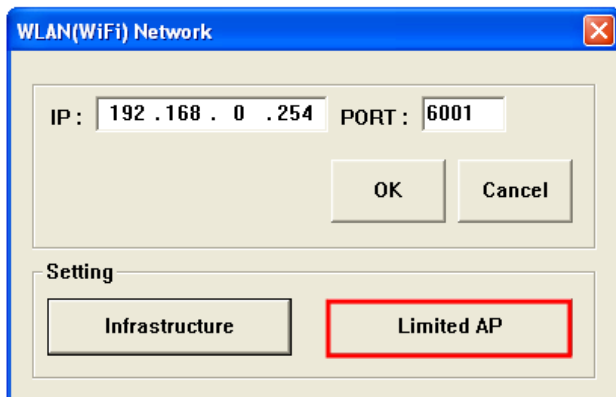
IP: 192.168.0.100 SUBNET: 255.255.255.0 GATEWAY: 192.168.0.1 PORT: 6001

SET WLAN

Exit

<p>Click the "OK" button; please wait for the completion of setting.</p>	
<p>When the setting is completed, this message appears as shown in the figure.</p> <p>Then disconnect the USB cable from the printer, the printer off and turn it on.</p>	
<p>Run the ping test at the command prompt.</p> <p>Ex) ping 192.168.0.100</p> <p><u>Note: PC and the printer must be on the same network.</u></p>	

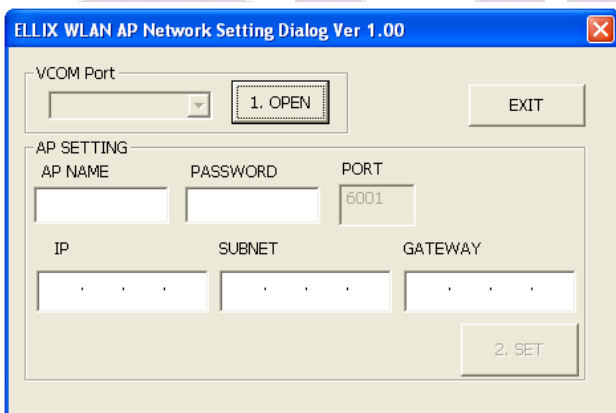
(6)Limited AP setting



Click "**Limited AP**" Button to in Wi-Fi Network dialog..

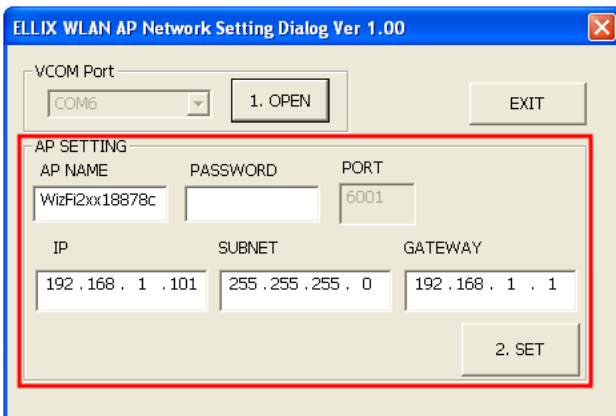
When a message box is appeared, turn a printer on and then

Connect USB cable between PC and printer.



Click "**1.OPEN**" button to start WLAN interface setting.

After a few seconds you can see the value of setting WLAN Interface as following image.

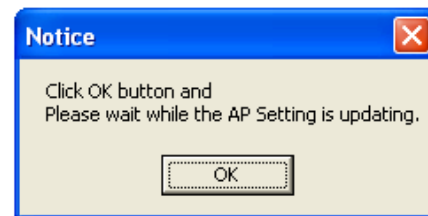


- AP NAME: WLAN Interface SSID
- PASSWORD: Password to connect WLAN Interface
(Enter a password with 10 number digit or alphabetic value.)
- MAC ADDRESS : MAC address of WLAN Interface
- IP : WLAN Interface IP
- SUBNET : WLAN Interface Subnet
- GATEWAY : WLAN Interface Gateway
- PORT : WLAN Interface Port number
(6001,only)

Enter unique AP name and 10-digit password and then set a network values (IP, SUBNET and GATEWAY).

Ex) AP NAME : TEST_AP
PASSWORD : 1234567890
IP : 192.168.0.123
SUBNET : 255.255.255.0
GATEWAY : 192.168.0.1
 →ch 1-11(USA only)
 →ch 1-13(Europe, Japan)

Click the "2.SET" button; please wait for the completion of setting.



When the setting is complete, a message appears as shown in the figure.

Disconnect the USB cable from the printer, then turn the printer off and turn it on.



To make sure it is set up properly, try searching WLAN interface.

This figure shows result of connection to WLAN interface on iPhone.

Please refer to the manual for how to set up a wireless network of wireless LAN equipment you are using.

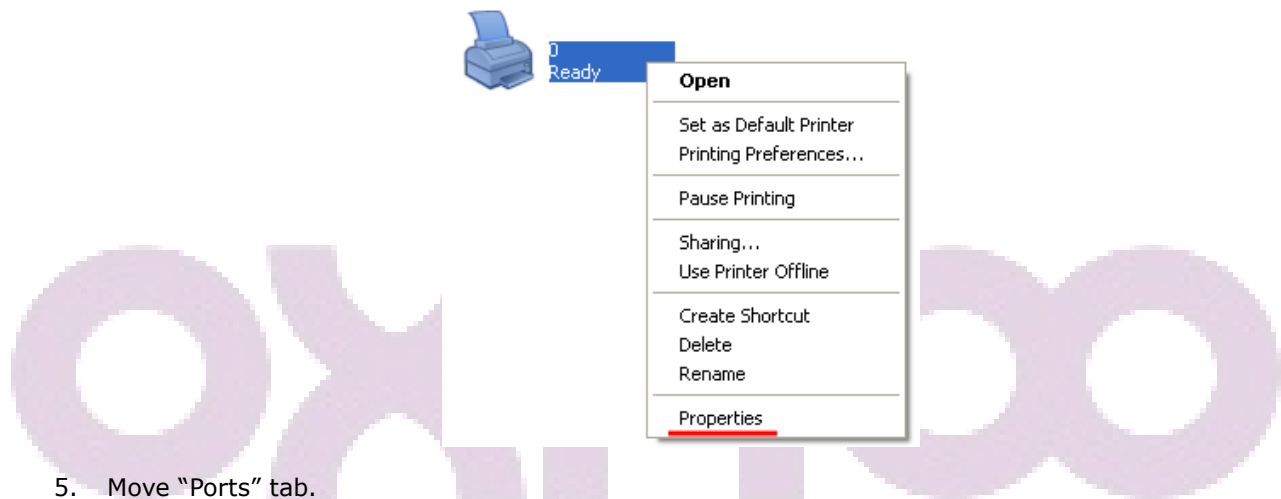


(7)Print Test page (Windows XP, POSReady 2009)

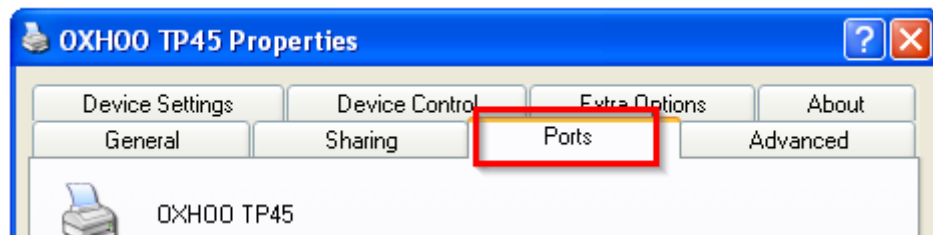
Install Printer Driver Installer . Please refer to the manual of Printer Driver Installer.

(Select a connection type of the printer: ETHERNET CONNECTION Input a Create a TCP/IP Printer Port: any value)

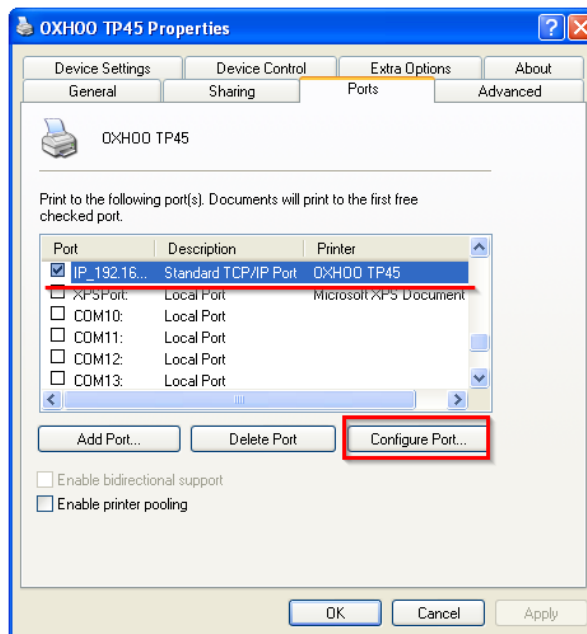
1. Turn a print off.
2. Disconnect a USB cable from printer.
3. Turn a print on again.
4. Select "OXH00 TPxx" in "Printers and Faxes" folder. Click a right mouse button and select "Properties".



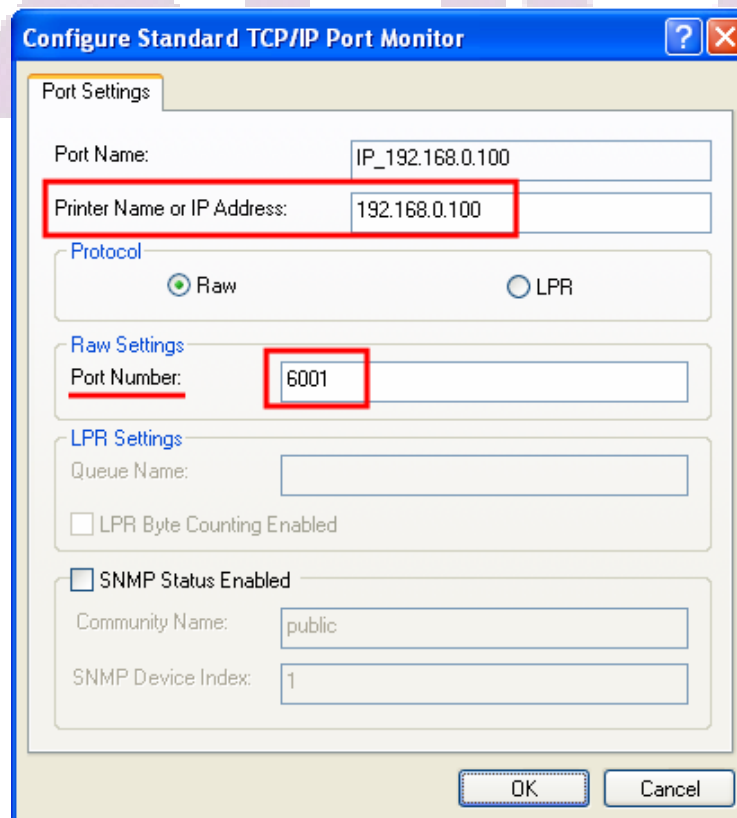
5. Move "Ports" tab.



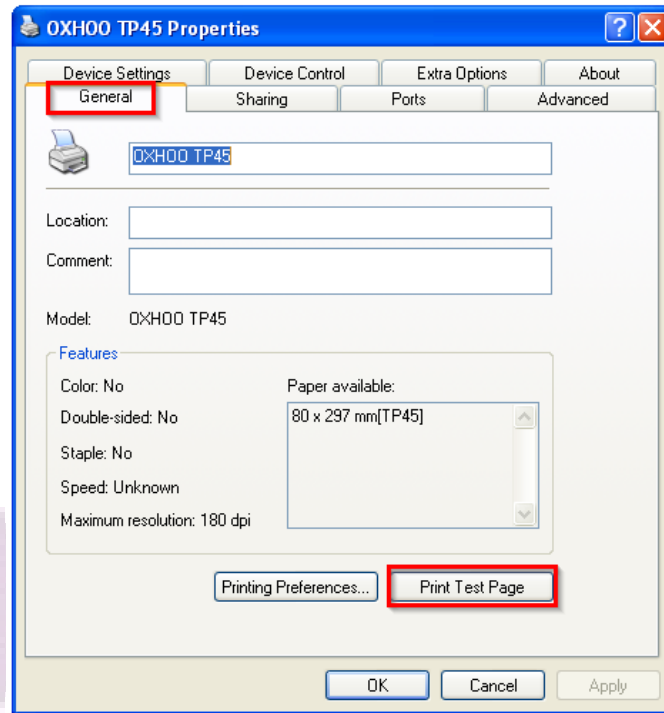
6. Select Standard TCP/IP Port and click "Configure Port" button.



7. Enter a WLAN IP and Port number.



-
8. Move "General" tab; click "Print Test Page". If a printer doesn't print any page, check network setting and run ping test.



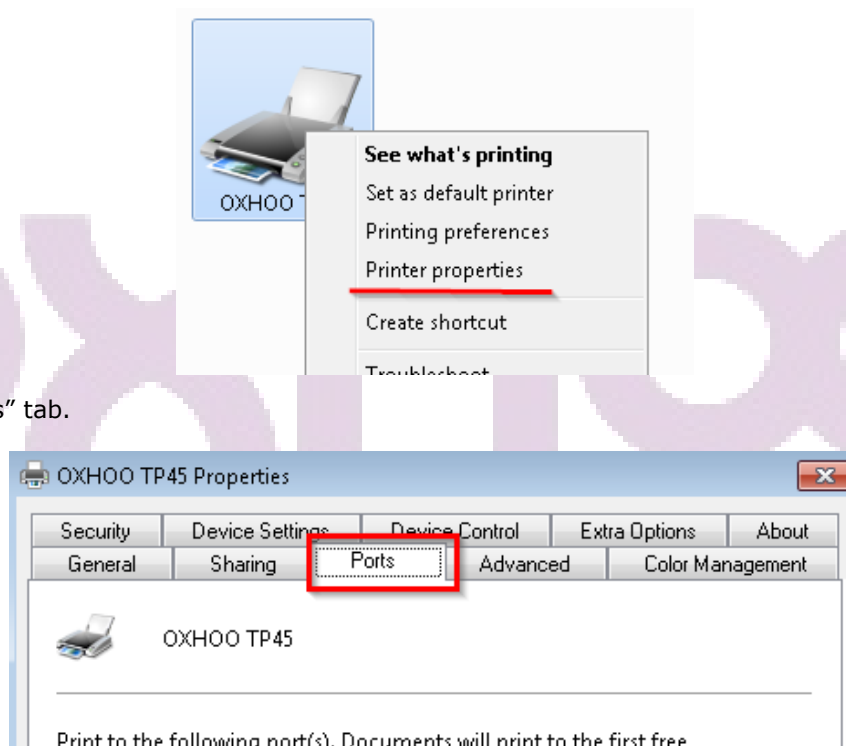
(8)Print Test page (Windows 7, POSReady 7)

Install Printer Driver Installer . Please refer to the manual of Printer Driver Installer.

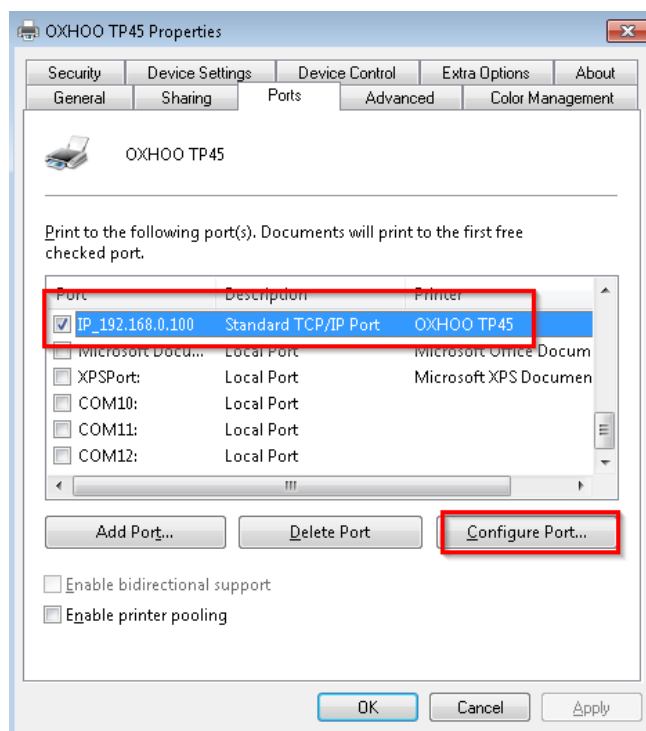
(Select a connection type of the printer: ETHERNET CONNECTION / Input a Create a TCP/IP Printer Port:
The value for use later)

1. Turn a print off..
2. Disconnect a USB cable from printer.
3. Turn a print on again.
4. Click "OXHOO TP xx" in "start → Control Panel → Hardware and Sound → Devices and Printers".
Click a right mouse button and click "Printer properties".

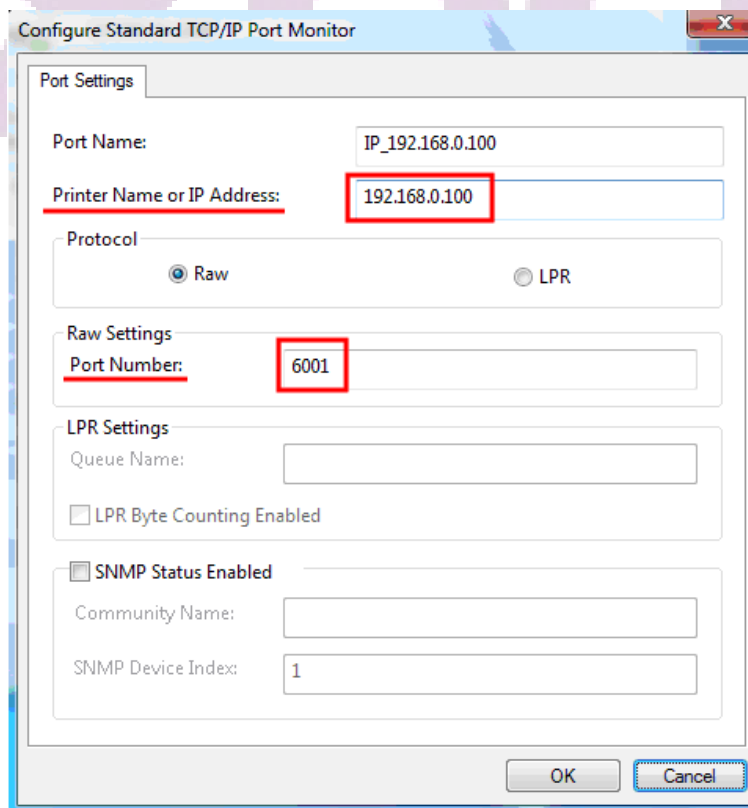
5. Move "Ports" tab.



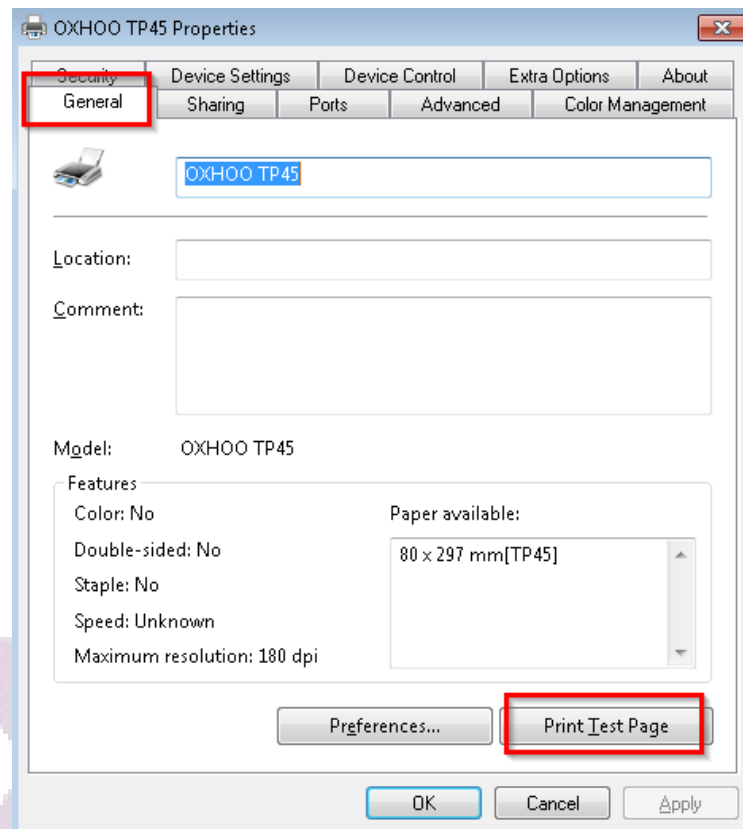
-
6. Select "Standard TCP/IP Port". Click "Configure Port" button



7. Input a WLAN IP address and Port number (6001).



-
8. Move "General" tab; click "Print Test Page". If a printer doesn't print any page, check network setting and do ping test.

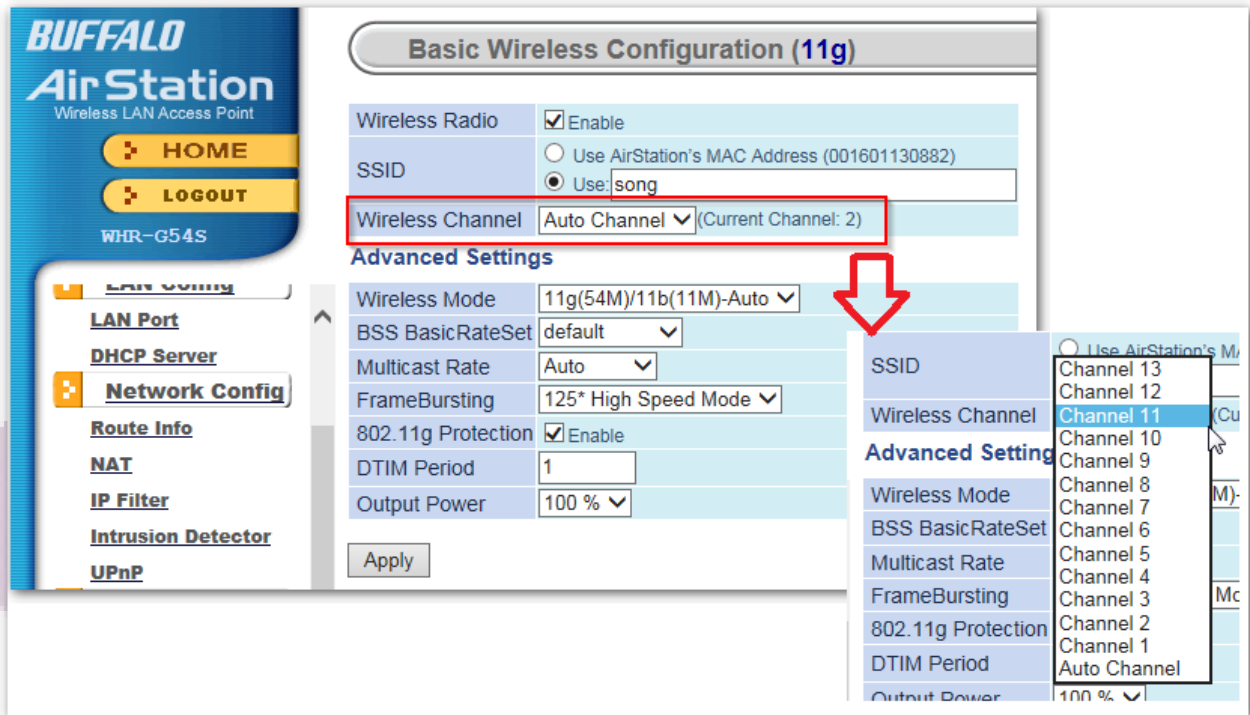


(9)WLAN Tips

The following content is the WLAN tips. Please reference.

Q : Printer reaction is too slow, or ping time value is too large.

A : Please try to move closer the physical distance to the WLAN interface and AP router. If there is no improvement, Please try to change the current channel of the wireless LAN channel (Wireless Channel) to another channel in the router settings. The following is an example of the router settings.



Q : WLAN settings are not saved in Infrastructure mode. The self-test sheet is not display before saved network settings.

A : Is encryption method of router that you are trying to connect is WEP? WEP is an older encryption scheme is vulnerable to security. Also, the router operating in abnormal mixed mode, there is a possibility that WLAN configuration is not performed. The recommended encryption method is WPA system. Even as it's inconvenient, please change the router settings to WPA for security.

Q : My AP is not detected in Infrastructure mode.

A : Please try to move close to the distance of the AP and the printer. Also, please make sure that radio frequency

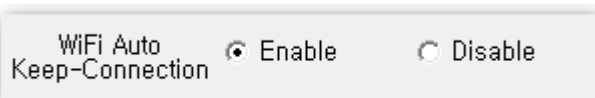
band of the AP is 2.4GHz. WLAN interface, does not support the AP frequency of 5GHz.

Q : WLAN communication error occurs intermittently.

A : Cause of the problem is there are many. Connection of the AP and WLAN is the most major cause. In USER

SETUP in order to solve such a problem, it offers a "WiFi Auto Keep Connection" function. (Supports firmware

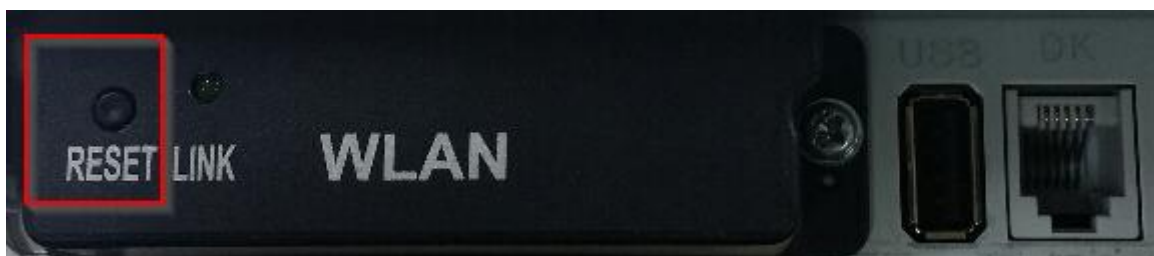
2.00 or higher)



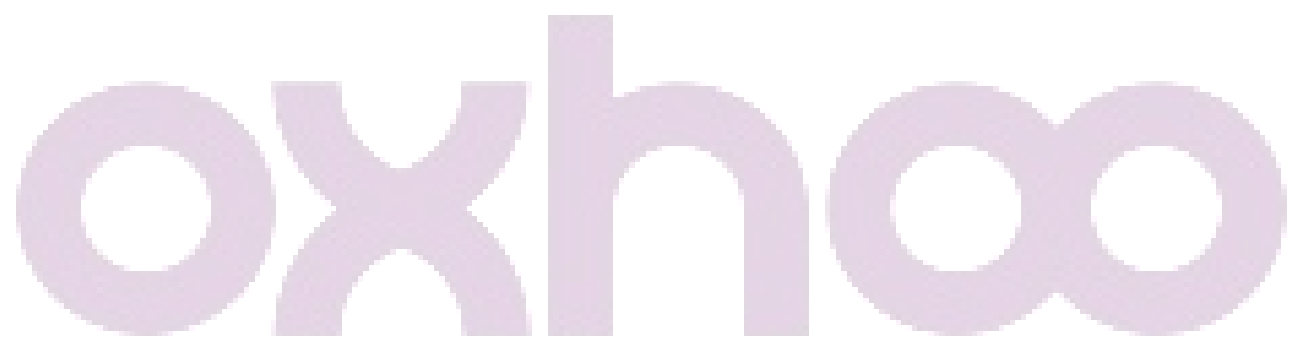
(10) WLAN factory reset

To initialize the WLAN interface, please proceed as follows.

- ① Turn on the printer. And, wait for 10 seconds.
- ② Press 3 times per second the RESET button on the back of the printer.



- ③ Then, LINK LED will blink 3 times.
- ④ Turn off the printer



REV 1.4

Revision History	
Rev 1.0	Sep, 06, 2013
Rev 1.1	Jul, 23, 2014
Rev 1.2	FEB, 09, 2015
Rev 1.3	MAR, 03, 2015
Rev 1.4	SEP, 27, 2016